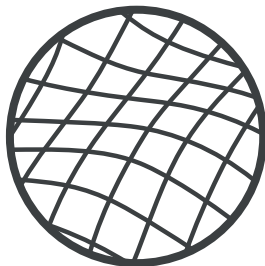




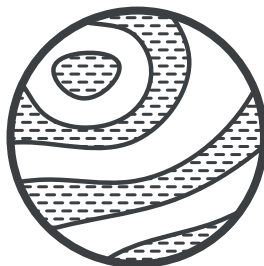
Curvecrete

Iconic. Elegant. Design Realised.

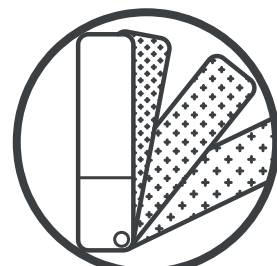
BEAUTIFUL, SUSTAINABLE CURVED CONCRETE WITH NO WASTE ARCHITECTS AND SPECIFIERS GUIDE



SELECT A
FORM AND
CURVATURE



CHOOSE
A TEXTURE



PICK A
COLOUR

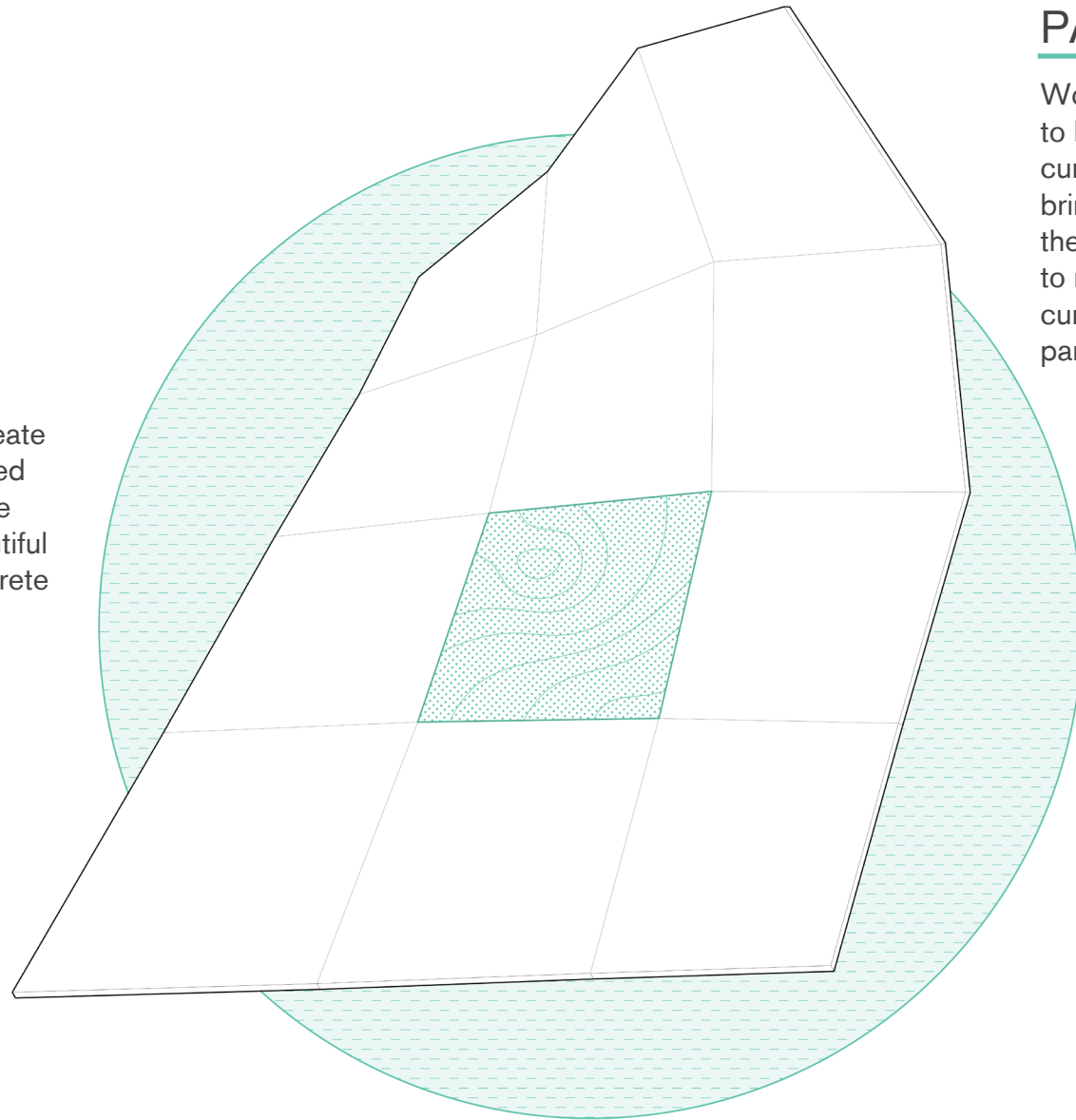


OUR ROBOTIC
TECHNOLOGY WILL
MAKE IT HAPPEN!

CURVATURE

ROBOTIC FORMWORK

Our machines can create different curved shaped panels. Our adjustable mould produces beautiful bespoke curved concrete panels with no waste.



PANELISATION

Work with our design team to help panelise your next curved competition entry! You bring the design, we'll bring the fabrication parameters to make it happen: minimum curvature RADIUS, SIZE of panel and SKEW.

COST-EFFECTIVE CURVATURE

Our forming techniques are completely reusable making our panels not only waste-free, but more cost effective for your client.

ENVISION A FORM

Bring your curved project to Curvecrete and we'll find a custom solution that will enable to build it. We've built tools to help bring curves to life.

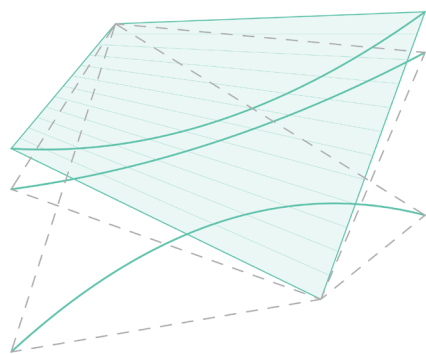
We can **panelise** the curved object and design a **support system** for the resulting interlocking panels.

We specialize in light-weight architectural **facades, infrastructure and urban furniture**, and we're able to find solutions for anything curved.

Our method of mechanically forming concrete uses a **single mould** that is totally adjustable and can produce bespoke curved concrete panels without requiring any formwork - making it more cost effective!

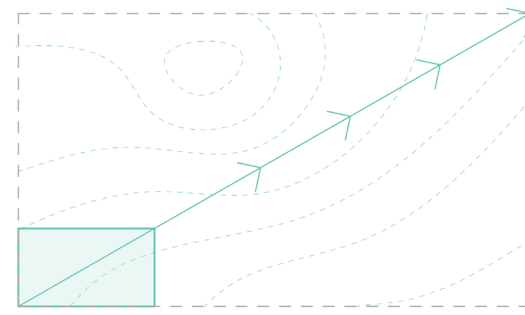
Our light-weight panels can **span incredible distances** through the power of curvature - an order of magnitude stiffer than flat panels.

At Curvecrete we are **always developing our robotic technology and formwork** technique in order to make more exciting forms possible. Get in touch and we'll find a custom solution that will enable the construction of your next curved project.



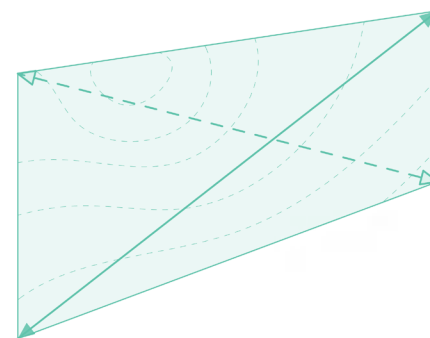
RADIUS CURVATURE

Our robots are able to generate ruled surfaces in any shape with a minimum radius of curvature of 1.5m.



SIZE

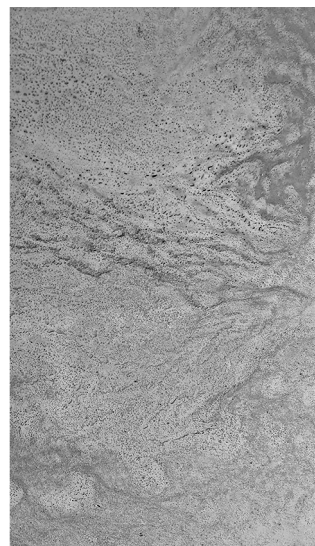
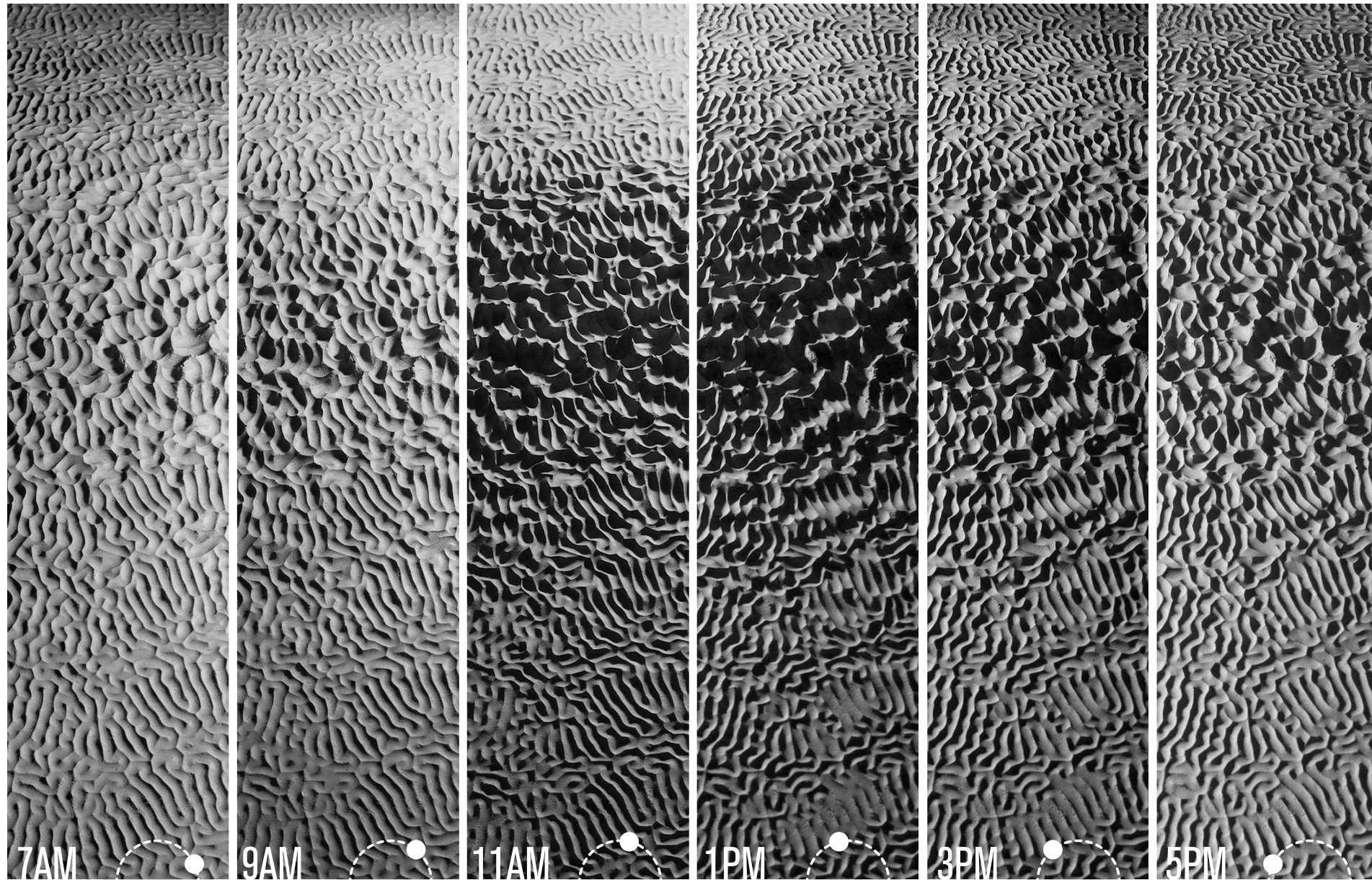
We can produce curved panels of a size up to 900 x 1800mm and standard textured flat panels up to 5m in their largest dimension.



SKEW

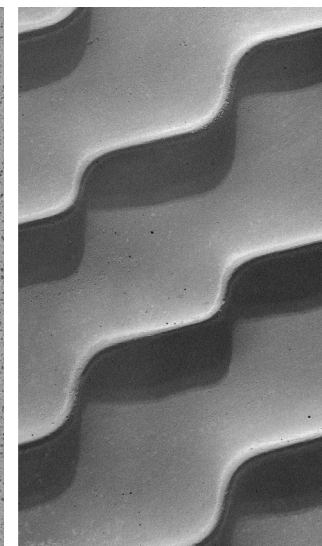
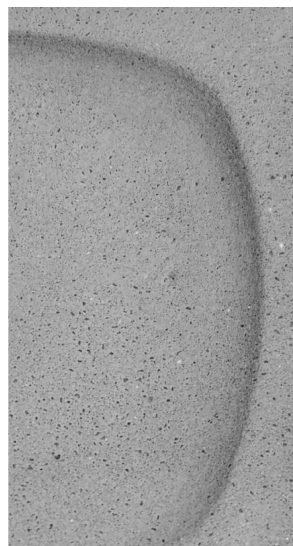
Our design and casting method allows you to create panels with different skewed shapes. Our maximum skew ratio is 1.30.

TEXTURE



PRECAST

MINIMALISTIC



INTRICATE

TOPOGRAPHIC



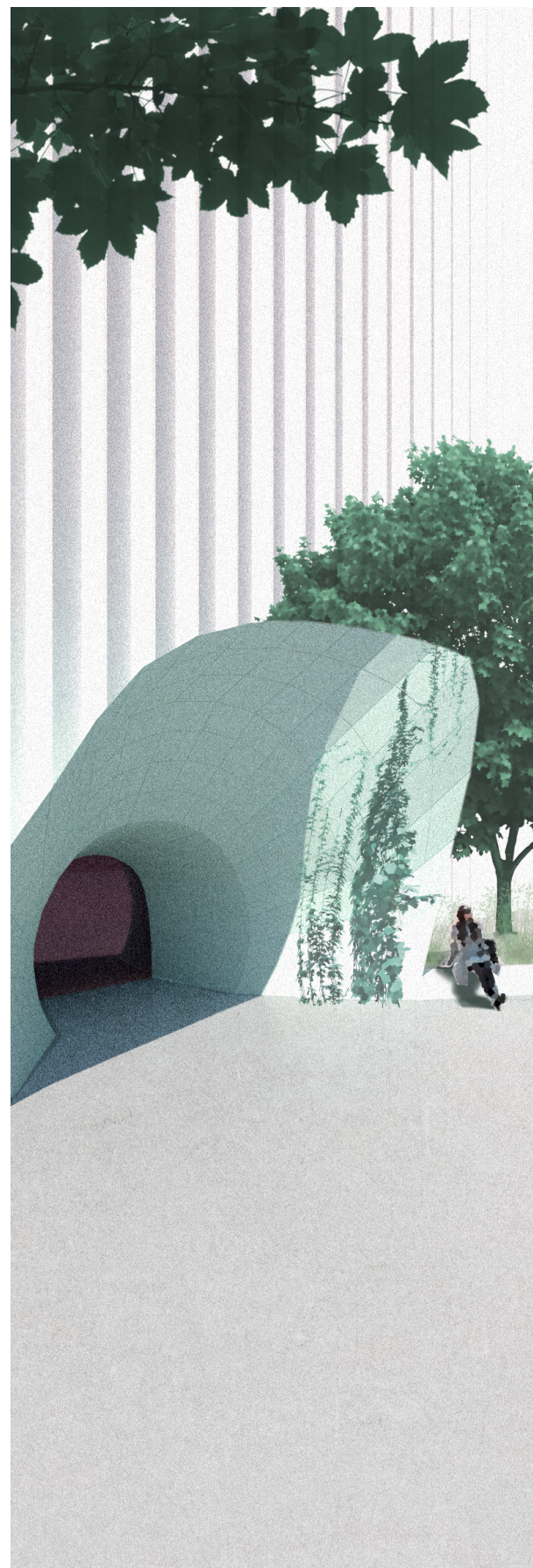
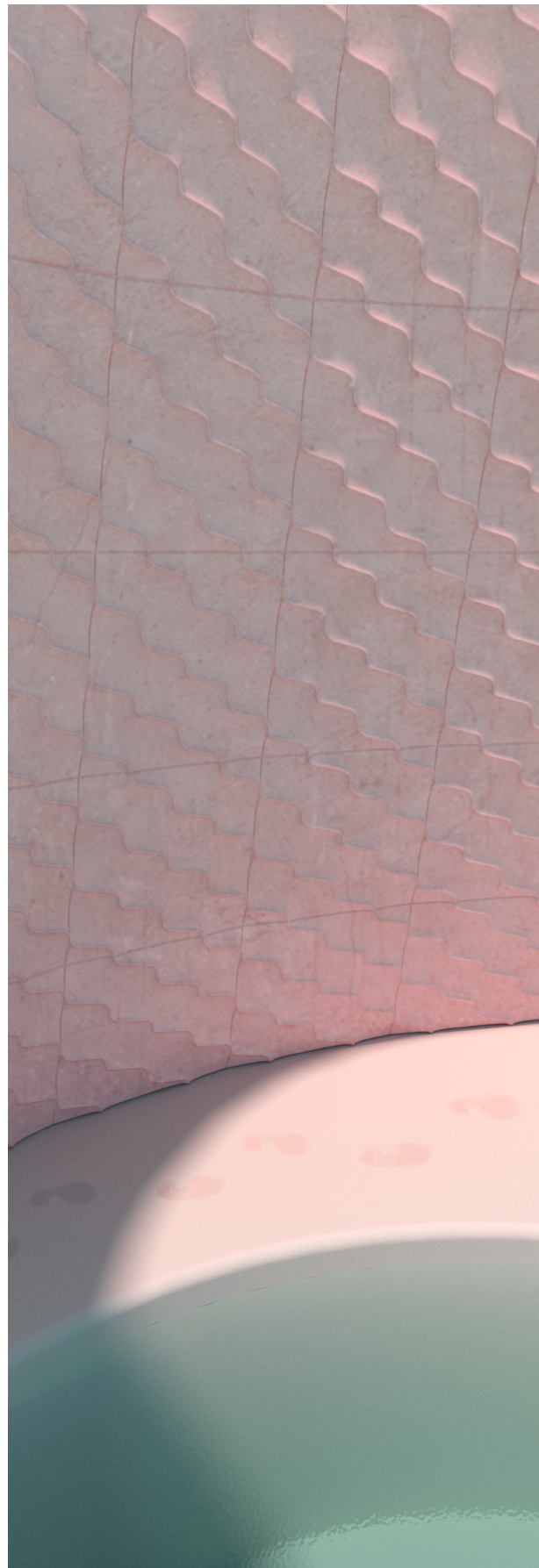
LIGHT AND SHADOW

Our method of robotically forming concrete uses **robotic mould technology** that is totally adjustable, completely reusable, and can produce a variety of bespoke curved concrete panels without wasting any manual formwork. This makes forming curves simpler, more cost effective, with higher levels of **customisation** to realise your design.

Test our samples or **imagine a new texture** specific to your curved project. From brutalism-inspired rough textures to minimalist looks or computer-assisted algorithmically-generated unique designs.

Explore subtle **variations in light and shadow** during the daylight hours or imagine new effects when your curves are artificially lit at night.

COLOUR



CREATE A SPACE

Envision the mood of your next project with Curvecrete's curved panels. Get inspired by our **colour samples** or send us your palette and we'll **colour-match** it. We have at our disposal TCM Colour's complete range of pigments.

We can also provide advice for coloured **stains** or **painted finishes** for your project.

Our panels can be installed in **interiors** as well as **exteriors** and we have a **variety of sealers** available that we can adapt to the needs of your project. Our grout colours are also customizable.

All our panels are **fire-rated** to AS1530.1 non-combustibility standards. A **graffiti-repellent treatment sealer** is available for exterior uses.

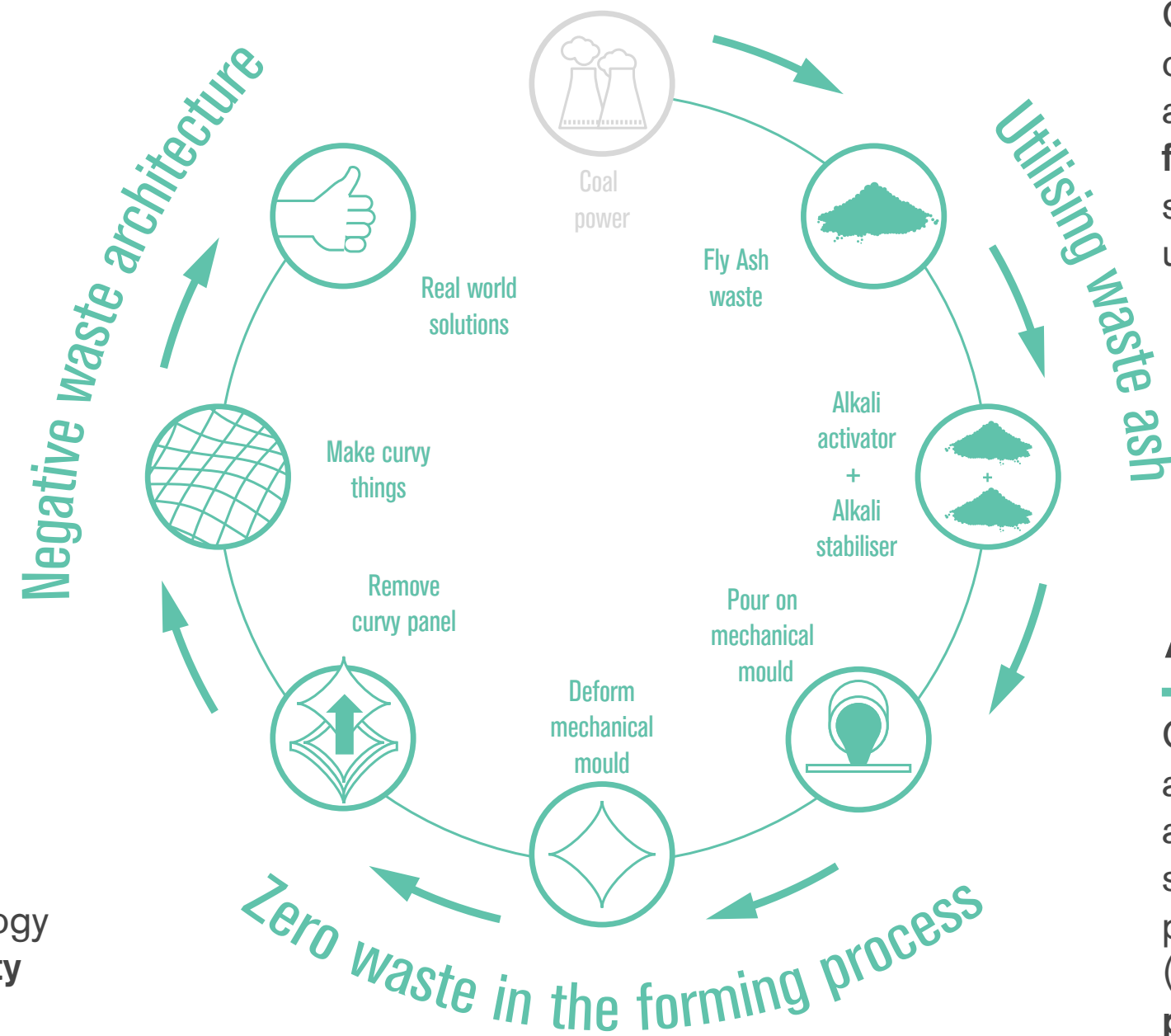
TRANSFORMING WASTE

Cement alone counts for almost 8% of global CO₂ emissions. Curvecrete's **low-carbon concrete mix** uses waste by-products: fly ash and blast furnace slag resulting in a reduction of 87% CO₂ for every tonne of concrete we substitute for our geopolymer panels.

INNOVATION

Every curved project requires a customized solution. All our panels adhere to strict **quality control** procedures. Make use of our technology to bring **innovation and sustainability points** to your next project!

Curvecrete



REUSABLE FORMWORK

Our robotic forming technology is completely reusable which eliminates all immediate waste. **No manual formwork** is required, no timber, steel, fiberglass or polystyrene is used.

AVAILABILITY

Our team and manufacturing facilities are **located in Melbourne**. We're always available to prototype and send custom samples to design teams and building professionals. If you're outside Victoria (or Australia) get in touch with us to **partner with us to utilise our robotic technology** or to discuss shipping options for our finished panels.

Get in touch with us at curvecrete.com or directly at curves@curvecrete.com
You can also find us on [Instagram](#) and [LinkedIn](#)